

# ***Nikon***



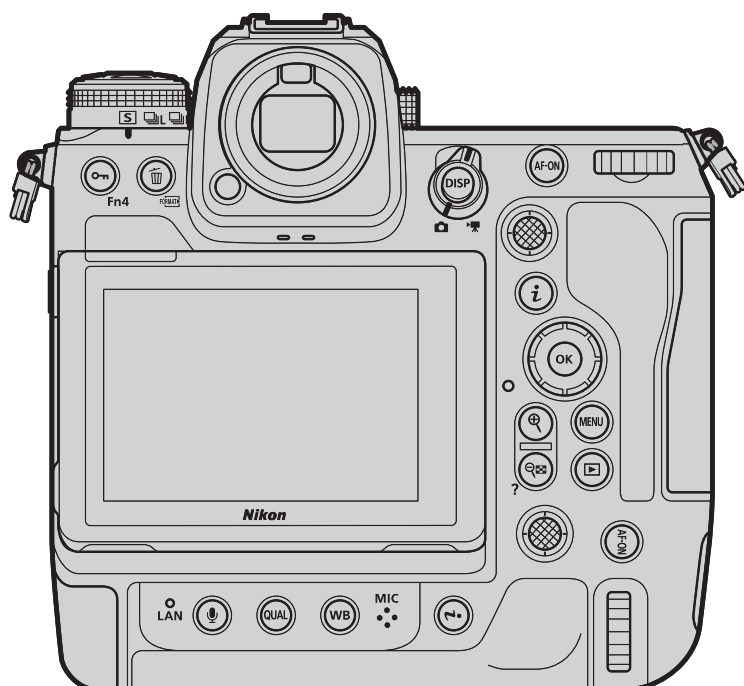
# **Z 9**

## **Professional**

### **Setting Guide**

**—Sports AF Edition—**

**Revision 1.0**



**En**

# Table of Contents

<b>Sports AF: Autofocus Basics.....</b>	<b>4</b>
Focus Mode: AF-C.....	4
AF-Area Mode: 3D-Tracking (Solo Events)/Dynamic-Area AF (S) (Teams).....	4
AF Subject Detection Options: Auto .....	5
Focus Tracking with Lock-On .....	5
Blocked Shot AF Response: [2] .....	5
Subject Motion: [Steady] .....	5
<b>AF-Area Mode .....</b>	<b>6</b>
<b>Sports AF: Custom Settings .....</b>	<b>8</b>
a1: AF-C Priority Selection .....	8
a3: Focus Tracking with Lock-On .....	9
a4: Focus Points Used .....	9
a5: Store Points by Orientation.....	10
a6: AF Activation .....	11
a7: Focus Point Persistence .....	12
a8: Limit AF-Area Mode Selection.....	14
a9: Focus Mode Restrictions.....	14
a10: Focus Point Wrap-Around .....	14
a14: Focus Point Selection Speed .....	14
<b>Sports AF: Custom Controls .....</b>	<b>15</b>
Focus-Related Control Assignments.....	15

<b>Recommended AF Settings by Event .....</b>	<b>17</b>
<b>Overview: Settings by Event .....</b>	<b>17</b>
<b>Soccer .....</b>	<b>18</b>
<b>Gymnastics .....</b>	<b>18</b>
Floor Exercises and Rhythmic Gymnastics .....	18
Balance Beam.....	19
Vault .....	19
Rings and Horizontal and Uneven Bars .....	19
<b>Athletics .....</b>	<b>20</b>
Sprints (Hand-Held, Single Runner, from the Front) .....	20
Hurdles .....	21
Marathons (from a Vehicle) .....	21
Shot Put, Discus, Hammer Throw, and Javelin (from the Front, at a Distance).....	21
Long Jump, Triple Jump, and Pole Vault (Facing Oncoming Jumpers) .....	22
High Jump.....	22
<b>Aquatics .....</b>	<b>23</b>
Swimming .....	23
Diving .....	24
Artistic Swimming .....	24
<b>Table Tennis .....</b>	<b>25</b>
<b>BMX and Skateboarding .....</b>	<b>25</b>
<b>Motor Sports .....</b>	<b>25</b>

# Sports AF: Autofocus Basics

The following settings are suitable for most sports:

<b>Focus mode</b>		AF-C
<b>AF-area mode</b>		<ul style="list-style-type: none"> <li>• <b>Solo events:</b> 3D-tracking</li> <li>• <b>Team events:</b> Dynamic-area AF (S)</li> </ul>
<b>Photo shooting menu</b>		
AF subject detection options		[Auto]
<b>Custom Settings</b>		
a1 AF-C priority selection		[Release]
a3 Focus tracking with lock-on	Blocked shot AF response	[2]
	Subject motion	[Steady]
a9 Focus mode restrictions		[Continuous AF]

## Focus Mode: AF-C

The camera adjusts focus continuously while the **AF-ON** button is pressed or the shutter-release button is pressed halfway.



## AF-Area Mode: 3D-Tracking (Solo Events)/Dynamic-Area AF (S) (Teams)

We recommend 3D-tracking as the AF-area mode for solo events. The focus point can be made to track a selected subject.



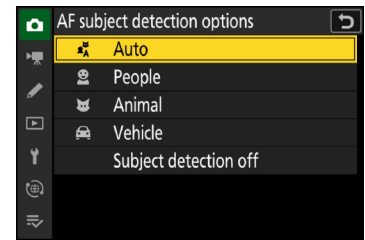
For team events, we recommend dynamic-area AF (S). You can quickly adjust focus as you switch from one player to another.



## AF Subject Detection Options: Auto

The camera will detect humans, animals, and vehicles and choose a subject for focus automatically.

- Subject detection is available when wide-area AF (S), wide-area AF (L), wide-area AF (C1), wide-area AF (C2), 3D-tracking, or auto-area AF is selected for AF-area mode.

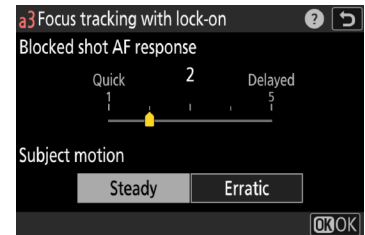


## Focus Tracking with Lock-On

Custom Setting a3 [Focus tracking with lock-on] controls how autofocus responds to changes in the distance to the subject.

### ■ Blocked Shot AF Response: [2]

Increasing the speed with which the autofocus system reacts to blocked shots ensures that focus responds quickly to frequent subject changes.



### ■ Subject Motion: [Steady]

[Steady] is suited to a wide variety of subjects.





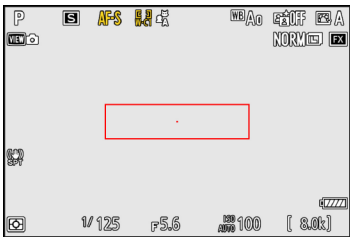


### 🔔 Recommended Settings by Event

See "[Recommended AF Settings by Event](#)" (page 17) for the recommended AF settings for different sporting events.

# AF-Area Mode

The following eight AF-area modes are available in focus mode AF-C.

AF-area mode	Description	Monitor
[1] Single-point AF	The camera focuses on a point selected by the user.	
[S] Dynamic-area AF (S)	The focus point is selected manually. The camera focuses on the subject in the selected focus point when autofocus is initiated, but if the subject later briefly leaves the selected point, the camera will focus based on information from surrounding points. Choose if the camera has difficulty focusing, or for active subjects that are hard to keep framed in a single point, and choose an option with broader coverage if the subject is moving unpredictably or occupies a large area of the frame.	
[M] Dynamic-area AF (M)		
[L] Dynamic-area AF (L)		
[WIDE-S] Wide-area AF (S)	As for single-point AF, except that the camera focuses on a wider area.	
[WIDE-L] Wide-area AF (L)		

AF-area mode	Description	Monitor
<div> <div></div> <div>W-C1</div> <div>W-C2</div> </div> <b>Wide-area AF (C1)</b> <b>Wide-area AF (C2)</b>	<p>The camera focuses on a subject chosen using a custom focus area whose dimensions (height and width in focus points) can be selected by the user from 20 different options.</p> <ul style="list-style-type: none"> <li>The size of the custom focus area for the current mode can be chosen by holding the focus-mode button and pressing , , , or .</li> <li>The size of the custom focus area can also be chosen using [AF-area mode] &gt; [Wide-area AF (C1)] or [Wide-area AF (C2)] in the photo shooting menu.</li> </ul>	 <p>13 × 3</p>
<div> <div></div> <div>3D</div> </div> <b>3D-tracking</b>	<p>The camera tracks focus on a selected subject. This option is available only in photo mode.</p> <ul style="list-style-type: none"> <li>Position the focus point over your subject and start tracking by pressing <b>AF-ON</b> or by pressing the shutter-release button halfway; focus will then track the selected subject as it moves through the frame.</li> <li>To end tracking and restore the previously-selected focus point, release the <b>AF-ON</b> or shutter-release button.</li> <li>If the subject leaves the frame, remove your finger from the shutter-release button and recompose the photograph with the subject in the selected focus point.</li> </ul>	
<div> <div></div> <div>Auto</div> </div> <b>Auto-area AF</b>	<p>The camera automatically detects the subject and selects the focus point.</p>	

### Custom Focus Areas

Use wide-area AF (C1) and wide-area AF (C2) to create focus areas tailored to subjects of a specific size.

### Caution: 3D-Tracking

The camera may be unable to track subjects that are obscured by other objects or leave the frame.

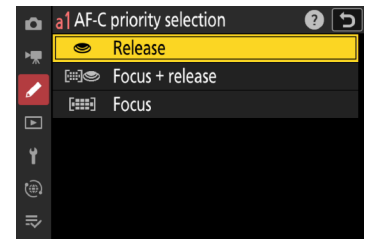
### Quick Focus-Point Selection

- For quicker focus-point selection, choose [Alternating points] for Custom Setting a4 [Focus points used] ([page 9](#)).
- If you prefer to use the sub-selector for focus-point selection, you can choose [Select center focus point] for Custom Setting f2 [Custom controls (shooting)] > [Sub-selector center] to allow the center of the sub-selector to be used to quickly select the center focus point ([page 15](#)).

# Sports AF: Custom Settings

## a1: AF-C Priority Selection

Custom Setting a1 [AF-C priority selection] controls whether the camera gives priority to focus or shutter release.



Shutter-release  
button pressed  
all the way down



⦿: Subject not in focus

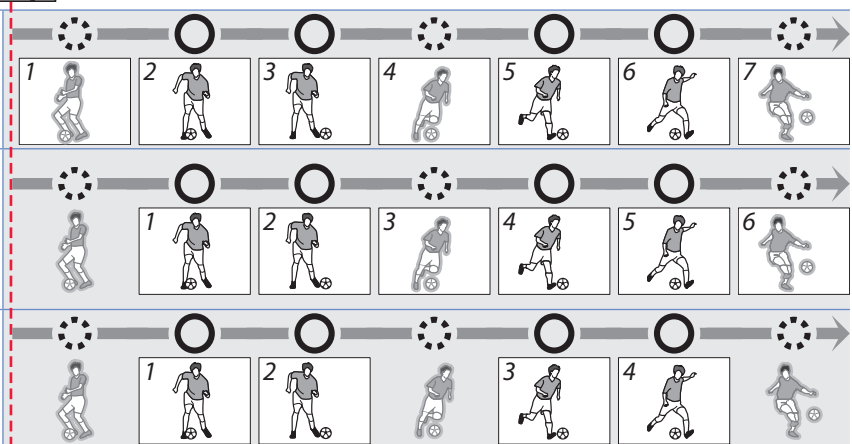
○: Subject in focus

□: Photo taken (frame number shown in top left corner)

**Release:** Pictures can be taken whether or not the camera is in focus. Frame rates do not slow during burst photography.

**Focus + release:** In burst mode, priority is given to focus for the first frame and to release for later frames, ensuring that the first frame is in focus and that no subsequent frames are missed. Frame rates do not slow.

**Focus:** Pictures can only be taken when the camera is in focus.

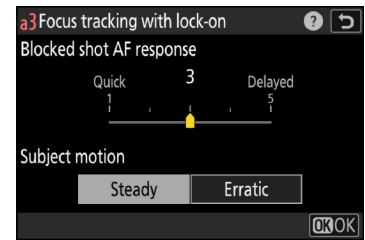


Note: Release timing not exactly as shown.



### a3: Focus Tracking with Lock-On

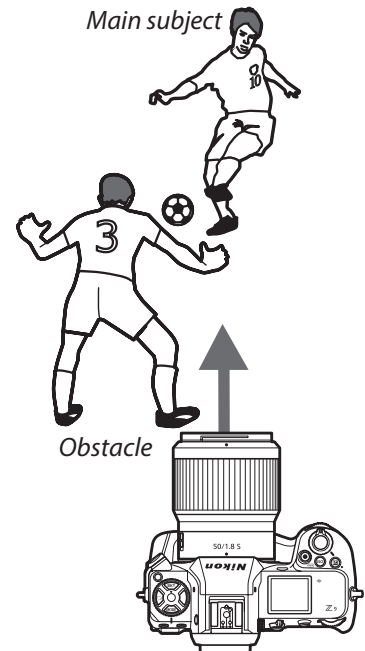
This menu contains two options: [Blocked shot AF response] and [Subject motion].



#### ■ Blocked Shot AF Response

If AF-C is selected for focus mode, focus tracking with lock-on will prevent the camera refocusing when your subject is briefly obscured by another object, ensuring that it will continue to track the main subject once the obstacle has moved away. Choose the length of time before the camera refocuses from [1 (Quick)], [2], [3], [4], and [5 (Delayed)]. Lock-on applies only while the camera is focusing; to focus at a new distance without waiting for lock-on to end, re-initiate autofocus.

The camera will track and focus on objects at the same distance as the main subject. High values (slow response) make the camera slow to refocus on obstacles when the shot is blocked. Select low values (quick response) to quickly refocus on subjects passing in front of the camera and for improved response when switching rapidly from one subject to another.



#### ■ Subject Motion

Choose how the camera tracks subjects in motion. Choose [Steady] for subjects approaching the camera at a steady pace, like sprinters or race cars on a track, [Erratic] for long or triple jumpers and other subjects prone to sudden stops and starts.

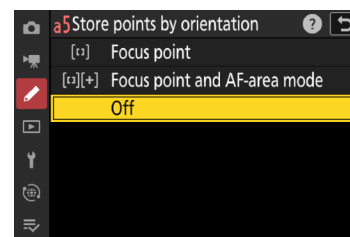
### a4: Focus Points Used

Choose number of focus points available for manual focus-point selection.

- Choosing [Alternating points] reduces the number of focus points to roughly a quarter of total available, speeding focus-point selection. The number of points available for the pinpoint AF AF-area mode is not affected.
- Manual focus-point selection is available in all AF-area modes except auto-area AF.

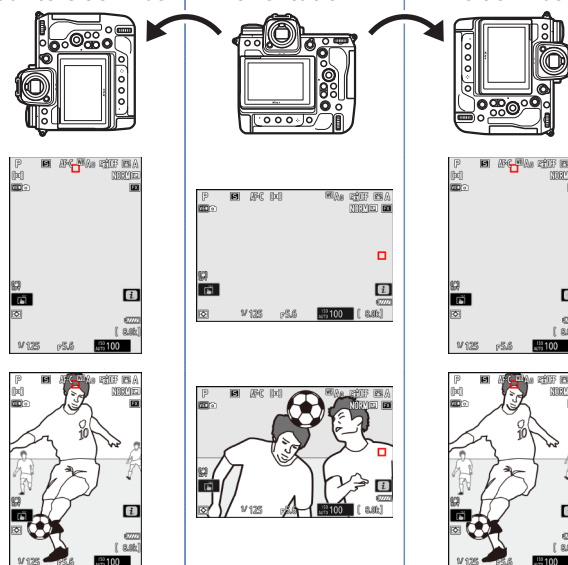
## a5: Store Points by Orientation

This option lets you concentrate on shooting without having to worry about focus-point selection. Choose whether the camera uses the same focus point and AF-area mode in all orientations, or stores separate focus points and/or AF-area modes for use in “wide” (landscape) orientation, “tall” (portrait) orientation with the camera rotated 90° clockwise, or “tall” orientation with the camera rotated 90° counterclockwise. The options are **[Focus point]**, **[Focus point and AF-area mode]**, and **[Off]**.

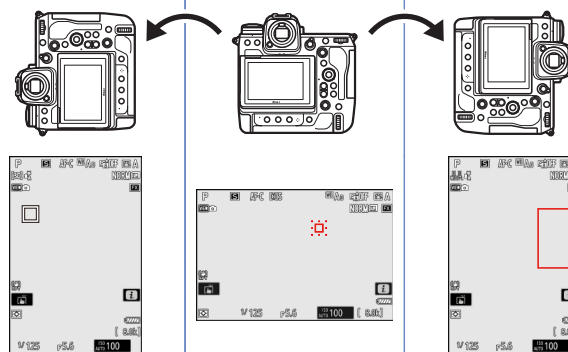


- **[Focus point]**: Rotating the camera restores the focus point last selected in the chosen orientation. If you select **[Off]** after choosing this option, the camera will select the center focus point for all orientations.

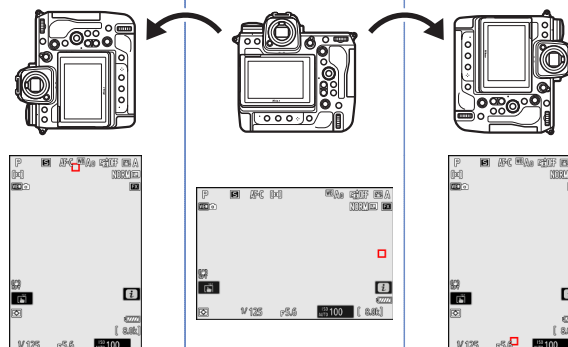
Camera rotated 90° counterclockwise    Landscape (wide) orientation    Camera rotated 90° clockwise



- **[Focus point and AF-area mode]**: Rotating the camera restores the focus point and AF-area mode last selected in the chosen orientation. In the example shown here, dynamic-area AF (S) is selected when the camera is in landscape orientation, 3D-tracking when it is rotated 90° counterclockwise, and wide-area AF (L) when it is rotated 90° clockwise.

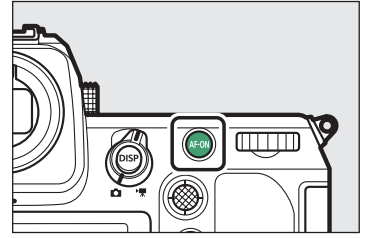



- **[Off]**: The same focus point and AF-area mode will be used regardless of camera orientation.



## a6: AF Activation

Choose **[AF-ON only]** to split the functions of the **AF-ON** button (or the control to which **[AF-ON]** has been assigned using Custom Setting f2 **[Custom controls (shooting)]**) and the shutter-release button so that the former is used for focus while the latter is used only to release the shutter. Lift your thumb from the **AF-ON** button to lock focus and take more shots at the current focus distance or prevent the camera refocusing when an object passes between you and your subject.



Highlighting **[AF-ON only]** and pressing  displays an **[Out-of-focus release]** option; for sports photography, confirm that **[Enable]** is selected.

### Focusing with Lens Function Buttons

To focus using the **L-Fn** or **L-Fn2** buttons found on certain lenses, select **[AF-ON]** for Custom Setting f2 **[Custom controls (shooting)]** > **[L-Fn Lens Fn button]** or **[L-Fn2 Lens Fn2 button]** ([page 15](#)).

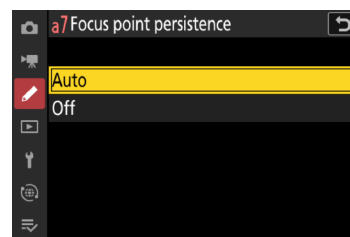
### F Mount Lenses with Focus Function Selectors

If an F mount lens with a focus function selector is mounted on the camera via a mount adapter, the focus function buttons on the lens will perform the same role as the camera **AF-ON** button when the focus function selector is in the **AF-ON** position. As of November, 2021, the list of lenses featuring focus function selectors is as follows:

- AF-S NIKKOR 800mm f/5.6E FL ED VR
- AF-S NIKKOR 600mm f/4G ED VR
- AF-S NIKKOR 600mm f/4E FL ED VR
- AF-S NIKKOR 500mm f/4G ED VR
- AF-S NIKKOR 500mm f/4E FL ED VR
- AF-S NIKKOR 500mm f/5.6E PF ED VR
- AF-S NIKKOR 400mm f/2.8G ED VR
- AF-S NIKKOR 400mm f/2.8E FL ED VR
- AF-S NIKKOR 300mm f/2.8G ED VR II
- AF-S NIKKOR 200mm f/2G ED VR II
- AF-S NIKKOR 70–200mm f/2.8E FL ED VR
- AF-S NIKKOR 120–300mm f/2.8E FL ED SR VR
- AF-S NIKKOR 180–400mm f/4E TC1.4 FL ED VR
- AF-S NIKKOR 200–400mm f/4G ED VR II

## a7: Focus Point Persistence

If you have assigned [AF-area mode] or [AF-area mode + AF-ON] to a control using Custom Setting f2 [Custom controls (shooting)], you can hold the control to switch temporarily from the current AF-area mode to a second, pre-selected mode. Selecting [Auto] for Custom Setting a7 [Focus point persistence] lets you do so without changing focus points.

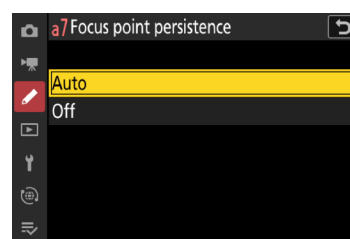


### ■ Using Focus-Point Persistence: An Example

In this example, we will assign [AF-area mode] to the Fn1 button and hold it to switch temporarily from the current AF-area mode (auto-area AF in this case) to a second, pre-selected mode (here dynamic-area AF (S)).

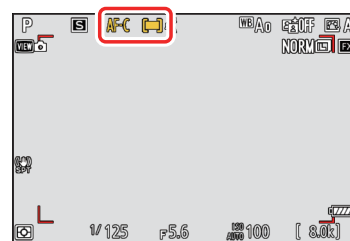
#### 1 Enable focus-point persistence.

Select [Auto] for Custom Setting a7 [Focus point persistence].



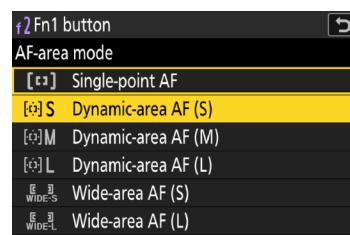
#### 2 Select the default AF-area mode.

For this example we will choose [Auto-area AF] and a focus mode of AF-C.



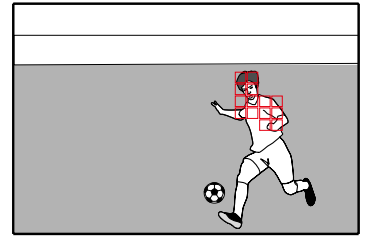
#### 3 Assign [AF-area mode] or [AF-area mode + AF-ON] to a control.

Select Custom Setting f2 [Custom controls (shooting)] and choose the desired control and role (in this case, the Fn1 button and [AF-area mode]). To choose the AF-area mode activated while the button is pressed, highlight [AF-area mode] and press . This example assumes that [Dynamic-area AF (S)] is selected.

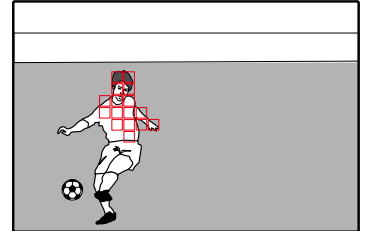


**4 Focus using the default AF-area mode.**

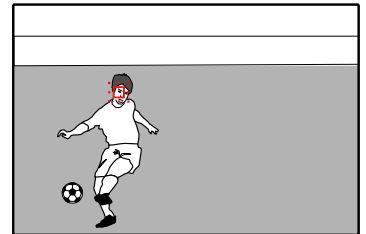
Press the shutter-release button halfway or press the **AF-ON** button to focus using the default AF-area mode. In the case of auto-area AF, the camera will automatically detect the subject and choose the focus area.



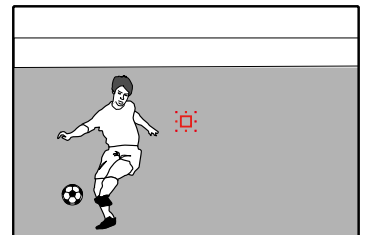
At the settings selected in this example, focus will track subject motion while the shutter-release button is pressed halfway or the **AF-ON** button is pressed.

**5 Switch AF-area modes.**

Hold the selected control (the **Fn1** button) to switch to the AF-area mode selected in Step 3 (dynamic-area AF (S)). Because we selected **[Auto]** for Custom Setting a7 **[Focus point persistence]** in Step 1, the camera will focus on the subject in the current focus point using dynamic-area AF (S).

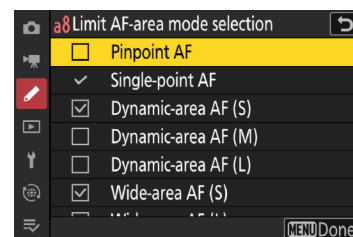


Had we selected **[Off]**, the camera would not have maintained focus on the subject in the point chosen by auto-area AF but would have instead switched to a different focus point.

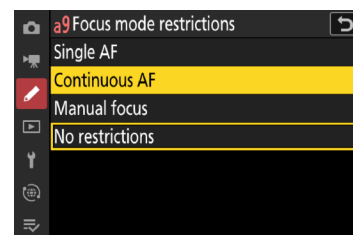



**a8: Limit AF-Area Mode Selection**

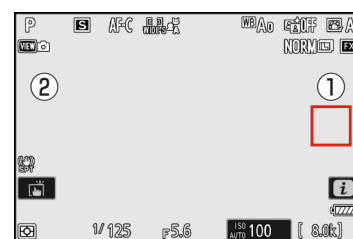
Limiting the choice of AF-area modes speeds AF-area mode selection and prevents your accidentally selecting an undesired option. For example, you can limit the choice of AF-area modes to dynamic-area AF (S) and wide-area AF (S) by selecting only these options in the AF-area mode list. Note that [Single-point AF] cannot be deselected.

**a9: Focus Mode Restrictions**

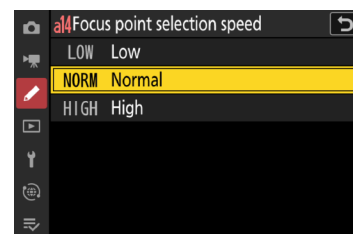
Limiting the choice of available focus modes prevents accidental selection of an undesired option. For sports photography, you may find it convenient to choose [Continuous AF] to stop you accidentally selecting AF-S or MF.

**a10: Focus Point Wrap-Around**

Select [ON] if you frequently switch between widely-separated focus points. Focus-point selection will “wrap around” from top to bottom, bottom to top, left to right, and right to left so that, for example, pressing  when a focus point on the right edge of the display is highlighted (①) selects the corresponding focus point on the left edge of the display (②).

**a14: Focus Point Selection Speed**

Choose the speed at which the camera cycles through focus points while the multi selector or sub-selector is pressed.



## Sports AF: Custom Controls


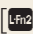
Custom Setting f2 [Custom controls (shooting)] can be used to assign different roles, including focus-related functions, to camera controls such as the Fn and AF-ON buttons

### Focus-Related Control Assignments

Camera controls can be assigned the following focus-related functions:

	Fn1	Fn2	Fn3	Fn4	Fn5	Fn6	Fn7	Fn8	Fn9	Fn10	Fn11	Fn12	Fn13	Fn14	Fn15	Fn16	Fn17	Fn18	Fn19	Fn20	Fn21	Fn22	Fn23	Fn24	Fn25	Fn26	Fn27	Fn28	Fn29	Fn30	Fn31	Fn32	Fn33	Fn34	Fn35	Fn36	Fn37	Fn38	Fn39	Fn40	Fn41	Fn42	Fn43	Fn44	Fn45	Fn46	Fn47	Fn48	Fn49	Fn50	Fn51	Fn52	Fn53	Fn54	Fn55	Fn56	Fn57	Fn58	Fn59	Fn60	Fn61	Fn62	Fn63	Fn64	Fn65	Fn66	Fn67	Fn68	Fn69	Fn70	Fn71	Fn72	Fn73	Fn74	Fn75	Fn76	Fn77	Fn78	Fn79	Fn80	Fn81	Fn82	Fn83	Fn84	Fn85	Fn86	Fn87	Fn88	Fn89	Fn90	Fn91	Fn92	Fn93	Fn94	Fn95	Fn96	Fn97	Fn98	Fn99	Fn100	Fn101	Fn102	Fn103	Fn104	Fn105	Fn106	Fn107	Fn108	Fn109	Fn110	Fn111	Fn112	Fn113	Fn114	Fn115	Fn116	Fn117	Fn118	Fn119	Fn120	Fn121	Fn122	Fn123	Fn124	Fn125	Fn126	Fn127	Fn128	Fn129	Fn130	Fn131	Fn132	Fn133	Fn134	Fn135	Fn136	Fn137	Fn138	Fn139	Fn140	Fn141	Fn142	Fn143	Fn144	Fn145	Fn146	Fn147	Fn148	Fn149	Fn150	Fn151	Fn152	Fn153	Fn154	Fn155	Fn156	Fn157	Fn158	Fn159	Fn160	Fn161	Fn162	Fn163	Fn164	Fn165	Fn166	Fn167	Fn168	Fn169	Fn170	Fn171	Fn172	Fn173	Fn174	Fn175	Fn176	Fn177	Fn178	Fn179	Fn180	Fn181	Fn182	Fn183	Fn184	Fn185	Fn186	Fn187	Fn188	Fn189	Fn190	Fn191	Fn192	Fn193	Fn194	Fn195	Fn196	Fn197	Fn198	Fn199	Fn200	Fn201	Fn202	Fn203	Fn204	Fn205	Fn206	Fn207	Fn208	Fn209	Fn210	Fn211	Fn212	Fn213	Fn214	Fn215	Fn216	Fn217	Fn218	Fn219	Fn220	Fn221	Fn222	Fn223	Fn224	Fn225	Fn226	Fn227	Fn228	Fn229	Fn230	Fn231	Fn232	Fn233	Fn234	Fn235	Fn236	Fn237	Fn238	Fn239	Fn240	Fn241	Fn242	Fn243	Fn244	Fn245	Fn246	Fn247	Fn248	Fn249	Fn250	Fn251	Fn252	Fn253	Fn254	Fn255	Fn256	Fn257	Fn258	Fn259	Fn260	Fn261	Fn262	Fn263	Fn264	Fn265	Fn266	Fn267	Fn268	Fn269	Fn270	Fn271	Fn272	Fn273	Fn274	Fn275	Fn276	Fn277	Fn278	Fn279	Fn280	Fn281	Fn282	Fn283	Fn284	Fn285	Fn286	Fn287	Fn288	Fn289	Fn290	Fn291	Fn292	Fn293	Fn294	Fn295	Fn296	Fn297	Fn298	Fn299	Fn300	Fn301	Fn302	Fn303	Fn304	Fn305	Fn306	Fn307	Fn308	Fn309	Fn310	Fn311	Fn312	Fn313	Fn314	Fn315	Fn316	Fn317	Fn318	Fn319	Fn320	Fn321	Fn322	Fn323	Fn324	Fn325	Fn326	Fn327	Fn328	Fn329	Fn330	Fn331	Fn332	Fn333	Fn334	Fn335	Fn336	Fn337	Fn338	Fn339	Fn340	Fn341	Fn342	Fn343	Fn344	Fn345	Fn346	Fn347	Fn348	Fn349	Fn350	Fn351	Fn352	Fn353	Fn354	Fn355	Fn356	Fn357	Fn358	Fn359	Fn360	Fn361	Fn362	Fn363	Fn364	Fn365	Fn366	Fn367	Fn368	Fn369	Fn370	Fn371	Fn372	Fn373	Fn374	Fn375	Fn376	Fn377	Fn378	Fn379	Fn380	Fn381	Fn382	Fn383	Fn384	Fn385	Fn386	Fn387	Fn388	Fn389	Fn390	Fn391	Fn392	Fn393	Fn394	Fn395	Fn396	Fn397	Fn398	Fn399	Fn400	Fn401	Fn402	Fn403	Fn404	Fn405	Fn406	Fn407	Fn408	Fn409	Fn410	Fn411	Fn412	Fn413	Fn414	Fn415	Fn416	Fn417	Fn418	Fn419	Fn420	Fn421	Fn422	Fn423	Fn424	Fn425	Fn426	Fn427	Fn428	Fn429	Fn430	Fn431	Fn432	Fn433	Fn434	Fn435	Fn436	Fn437	Fn438	Fn439	Fn440	Fn441	Fn442	Fn443	Fn444	Fn445	Fn446	Fn447	Fn448	Fn449	Fn450	Fn451	Fn452	Fn453	Fn454	Fn455	Fn456	Fn457	Fn458	Fn459	Fn460	Fn461	Fn462	Fn463	Fn464	Fn465	Fn466	Fn467	Fn468	Fn469	Fn470	Fn471	Fn472	Fn473	Fn474	Fn475	Fn476	Fn477	Fn478	Fn479	Fn480	Fn481	Fn482	Fn483	Fn484	Fn485	Fn486	Fn487	Fn488	Fn489	Fn490	Fn491	Fn492	Fn493	Fn494	Fn495	Fn496	Fn497	Fn498	Fn499	Fn500	Fn501	Fn502	Fn503	Fn504	Fn505	Fn506	Fn507	Fn508	Fn509	Fn510	Fn511	Fn512	Fn513	Fn514	Fn515	Fn516	Fn517	Fn518	Fn519	Fn520	Fn521	Fn522	Fn523	Fn524	Fn525	Fn526	Fn527	Fn528	Fn529	Fn530	Fn531	Fn532	Fn533	Fn534	Fn535	Fn536	Fn537	Fn538	Fn539	Fn540	Fn541	Fn542	Fn543	Fn544	Fn545	Fn546	Fn547	Fn548	Fn549	Fn550	Fn551	Fn552	Fn553	Fn554	Fn555	Fn556	Fn557	Fn558	Fn559	Fn560	Fn561	Fn562	Fn563	Fn564	Fn565	Fn566	Fn567	Fn568	Fn569	Fn570	Fn571	Fn572	Fn573	Fn574	Fn575	Fn576	Fn577	Fn578	Fn579	Fn580	Fn581	Fn582	Fn583	Fn584	Fn585	Fn586	Fn587	Fn588	Fn589	Fn590	Fn591	Fn592	Fn593	Fn594	Fn595	Fn596	Fn597	Fn598	Fn599	Fn600	Fn601	Fn602	Fn603	Fn604	Fn605	Fn606	Fn607	Fn608	Fn609	Fn610	Fn611	Fn612	Fn613	Fn614	Fn615	Fn616	Fn617	Fn618	Fn619	Fn620	Fn621	Fn622	Fn623	Fn624	Fn625	Fn626	Fn627	Fn628	Fn629	Fn630	Fn631	Fn632	Fn633	Fn634	Fn635	Fn636	Fn637	Fn638	Fn639	Fn640	Fn641	Fn642	Fn643	Fn644	Fn645	Fn646	Fn647	Fn648	Fn649	Fn650	Fn651	Fn652	Fn653	Fn654	Fn655	Fn656	Fn657	Fn658	Fn659	Fn660	Fn661	Fn662	Fn663	Fn664	Fn665	Fn666	Fn667	Fn668	Fn669	Fn670	Fn671	Fn672	Fn673	Fn674	Fn675	Fn676	Fn677	Fn678	Fn679	Fn680	Fn681	Fn682	Fn683	Fn684	Fn685	Fn686	Fn687	Fn688	Fn689	Fn690	Fn691	Fn692	Fn693	Fn694	Fn695	Fn696	Fn697	Fn698	Fn699	Fn700	Fn701	Fn702	Fn703	Fn704	Fn705	Fn706	Fn707	Fn708	Fn709	Fn710	Fn711	Fn712	Fn713	Fn714	Fn715	Fn716	Fn717	Fn718	Fn719	Fn720	Fn721	Fn722	Fn723	Fn724	Fn725	Fn726	Fn727	Fn728	Fn729	Fn730	Fn731	Fn732	Fn733	Fn734	Fn735	Fn736	Fn737	Fn738	Fn739	Fn740	Fn741	Fn742	Fn743	Fn744	Fn745	Fn746	Fn747	Fn748	Fn749	Fn750	Fn751	Fn752	Fn753	Fn754	Fn755	Fn756	Fn757	Fn758	Fn759	Fn760	Fn761	Fn762	Fn763	Fn764	Fn765	Fn766	Fn767	Fn768	Fn769	Fn770	Fn771	Fn772	Fn773	Fn774	Fn775	Fn776	Fn777	Fn778	Fn779	Fn780	Fn781	Fn782	Fn783	Fn784	Fn785	Fn786	Fn787	Fn788	Fn789	Fn790	Fn791	Fn792	Fn793	Fn794	Fn795	Fn796	Fn797	Fn798	Fn799	Fn800	Fn801	Fn802	Fn803	Fn804	Fn805	Fn806	Fn807	Fn808	Fn809	Fn810	Fn811	Fn812	Fn813	Fn814	Fn815	Fn816	Fn817	Fn818	Fn819	Fn820	Fn821	Fn822	Fn823	Fn824	Fn825	Fn826	Fn827	Fn828	Fn829	Fn830	Fn831	Fn832	Fn833	Fn834	Fn835	Fn836	Fn837	Fn838	Fn839	Fn840	Fn841	Fn842	Fn843	Fn844	Fn845	Fn846	Fn847	Fn848	Fn849	Fn850	Fn851	Fn852	Fn853	Fn854	Fn855	Fn856	Fn857	Fn858	Fn859	Fn860	Fn861	Fn862	Fn863	Fn864	Fn865	Fn866	Fn867	Fn868	Fn869	Fn870	Fn871	Fn872	Fn873	Fn874	Fn875	Fn876	Fn877	Fn878	Fn879	Fn880	Fn881	Fn882	Fn883	Fn884	Fn885	Fn886	Fn887	Fn888	Fn889	Fn890	Fn891	Fn892	Fn893	Fn894	Fn895	Fn896	Fn897	Fn898	Fn899	Fn900	Fn901	Fn902	Fn903	Fn904	Fn905	Fn906	Fn907	Fn908	Fn909	Fn910	Fn911	Fn912	Fn913	Fn914	Fn915	Fn916	Fn917	Fn918	Fn919	Fn920	Fn921	Fn922	Fn923	Fn924	Fn925	Fn926	Fn927	Fn928	Fn929	Fn930	Fn931	Fn932	Fn933	Fn934	Fn935	Fn936	Fn937	Fn938	Fn939	Fn940	Fn941	Fn942	Fn943	Fn944	Fn945	Fn946	Fn947	Fn948	Fn949	Fn950	Fn951	Fn952	Fn953	Fn954	Fn955	Fn956	Fn957	Fn958	Fn959	Fn960	Fn961	Fn962	Fn963	Fn964	Fn965	Fn966	Fn967	Fn968	Fn969	Fn970	Fn971	Fn972	Fn973	Fn974	Fn975	Fn976	Fn977	Fn978	Fn979	Fn980	Fn981	Fn982	Fn983	Fn984	Fn985	Fn986	Fn987	Fn988	Fn989	Fn990	Fn991	Fn992	Fn993	Fn994	Fn995	Fn996	Fn997	Fn998	Fn999	Fn1000	Fn1001	Fn1002	Fn1003	Fn1004	Fn1005	Fn1006	Fn1007	Fn1008	Fn1009	Fn1010	Fn1011	Fn1012	Fn1013	Fn1014	Fn1015	Fn1016	Fn1017	Fn1018	Fn1019	Fn1020	Fn1021	Fn1022	Fn1023	Fn1024	Fn1025	Fn1026	Fn1027	Fn1028	Fn1029	Fn1030	Fn1031	Fn1032	Fn1033	Fn1034	Fn1035	Fn1036	Fn1037	Fn1038	Fn1039	Fn1040	Fn1041	Fn1042	Fn1043	Fn1044	Fn1045	Fn1046	Fn1047	Fn1048	Fn1049	Fn1050	Fn1051	Fn1052	Fn1053	Fn1054	Fn1055	Fn1056	Fn1057	Fn1058	Fn1059	Fn1060	Fn1061	Fn1062	Fn1063	Fn1064	Fn1065	Fn1066	Fn1067	Fn1068	Fn1069	Fn1070	Fn1071	Fn1072	Fn1073	Fn1074	Fn1075	Fn1076	Fn1077	Fn1078	Fn1079	Fn1080	Fn1081	Fn1082	Fn1083	Fn1084	Fn1085	Fn1086	Fn1087	Fn1088	Fn1089	Fn1090	Fn1091	Fn1092	Fn1093	Fn1094	Fn1095	Fn1096	Fn1097	Fn1098	Fn1099	Fn1100	Fn1101	Fn1102	Fn1103	Fn1104	Fn1105	Fn1106	Fn1107	Fn1108	Fn1109	Fn1110	Fn1111	Fn1112	Fn1113	Fn1114	Fn1115	Fn1116	Fn1117	Fn1118	Fn1119	Fn1120	Fn1121	Fn1122	Fn1123	Fn1124	Fn1125	Fn1126	Fn1127	Fn1128	Fn1129	Fn1130	Fn1131	Fn1132	Fn1133	Fn1134	Fn1135	Fn1136	Fn1137	Fn1138	Fn1139	Fn1140	Fn1141	Fn1142	Fn1143	Fn1144	Fn1145	Fn1146	Fn1147	Fn1148	Fn1149	Fn1150	Fn1151	Fn1152	Fn1153	Fn1154	Fn1155	Fn1156	Fn1157	Fn1158	Fn1159	Fn1160	Fn1161	Fn1162	Fn1163	Fn1164	Fn1165	Fn1166	Fn1167	Fn1168	Fn1169	Fn1170	Fn1171	Fn1172	Fn1173	Fn1174	Fn1175	Fn1176	Fn1177	Fn1178	Fn1179	Fn1180	Fn1181	Fn1182	Fn1183	Fn1184	Fn1185	Fn1186	Fn1187	Fn1188	Fn1189	Fn1190	Fn1191	Fn1192	Fn1193	Fn1194	Fn1195	Fn1196	Fn1197	Fn1198	Fn1199	Fn1200	Fn1201	Fn1202	Fn1203	Fn1204	Fn1205	Fn1206	Fn1207	Fn1208	Fn1209	Fn1210	Fn1211	Fn1212	Fn1213	Fn1214	Fn1215	Fn1216	Fn1217	Fn1218	Fn1219	Fn1220	Fn1221	Fn1222	Fn1223	Fn1224	Fn1225	Fn1226	Fn1227	Fn1228	Fn1229	Fn1230	Fn1231	Fn1232	Fn1233	Fn1234	Fn1235	Fn1236	Fn1237	Fn1238	Fn1239	Fn1240	Fn1241	Fn1242	Fn1243	Fn1244	Fn1245	Fn1246	Fn1247	Fn1248	Fn1249	Fn1250	Fn1251	Fn1252	Fn1253	Fn1254	Fn1255	Fn1256	Fn1257	Fn1258	Fn1259	Fn1260	Fn1261	Fn1262	Fn1263	Fn1264	Fn1265	Fn1266	Fn1267	Fn1268	Fn1269	Fn1270	Fn1271	Fn1272	Fn1273	Fn1274	Fn1275	Fn1276	Fn1277	Fn1278	Fn1279	Fn1280	Fn1281	Fn1282	Fn1283	Fn1284	Fn1285	Fn1286	Fn1287	Fn1288	Fn1289	Fn1290	Fn1291	Fn1292	Fn1293	Fn1294	Fn1295	Fn1296	Fn1297	Fn1298	Fn1299	Fn1300	Fn1301	Fn1302	Fn1303	Fn1304	Fn1305	Fn1306	Fn1307	Fn1308	Fn1309	Fn1310	Fn1311	Fn1312	Fn1313	Fn1314	Fn1315	Fn1316	Fn1317	Fn1318	Fn1319	Fn1320	Fn1321	Fn1322	Fn1323	Fn1324	Fn1325
--	-----	-----	-----	-----	-----	-----	-----	-----	-----	------	------	------	------	------	------	------	------	------	------	------	------	------	------	------	------	------	------	------	------	------	------	------	------	------	------	------	------	------	------	------	------	------	------	------	------	------	------	------	------	------	------	------	------	------	------	------	------	------	------	------	------	------	------	------	------	------	------	------	------	------	------	------	------	------	------	------	------	------	------	------	------	------	------	------	------	------	------	------	------	------	------	------	------	------	------	------	------	------	------	-------	-------	-------	-------	-------	-------	-------	-------	-------	-------	-------	-------	-------	-------	-------	-------	-------	-------	-------	-------	-------	-------	-------	-------	-------	-------	-------	-------	-------	-------	-------	-------	-------	-------	-------	-------	-------	-------	-------	-------	-------	-------	-------	-------	-------	-------	-------	-------	-------	-------	-------	-------	-------	-------	-------	-------	-------	-------	-------	-------	-------	-------	-------	-------	-------	-------	-------	-------	-------	-------	-------	-------	-------	-------	-------	-------	-------	-------	-------	-------	-------	-------	-------	-------	-------	-------	-------	-------	-------	-------	-------	-------	-------	-------	-------	-------	-------	-------	-------	-------	-------	-------	-------	-------	-------	-------	-------	-------	-------	-------	-------	-------	-------	-------	-------	-------	-------	-------	-------	-------	-------	-------	-------	-------	-------	-------	-------	-------	-------	-------	-------	-------	-------	-------	-------	-------	-------	-------	-------	-------	-------	-------	-------	-------	-------	-------	-------	-------	-------	-------	-------	-------	-------	-------	-------	-------	-------	-------	-------	-------	-------	-------	-------	-------	-------	-------	-------	-------	-------	-------	-------	-------	-------	-------	-------	-------	-------	-------	-------	-------	-------	-------	-------	-------	-------	-------	-------	-------	-------	-------	-------	-------	-------	-------	-------	-------	-------	-------	-------	-------	-------	-------	-------	-------	-------	-------	-------	-------	-------	-------	-------	-------	-------	-------	-------	-------	-------	-------	-------	-------	-------	-------	-------	-------	-------	-------	-------	-------	-------	-------	-------	-------	-------	-------	-------	-------	-------	-------	-------	-------	-------	-------	-------	-------	-------	-------	-------	-------	-------	-------	-------	-------	-------	-------	-------	-------	-------	-------	-------	-------	-------	-------	-------	-------	-------	-------	-------	-------	-------	-------	-------	-------	-------	-------	-------	-------	-------	-------	-------	-------	-------	-------	-------	-------	-------	-------	-------	-------	-------	-------	-------	-------	-------	-------	-------	-------	-------	-------	-------	-------	-------	-------	-------	-------	-------	-------	-------	-------	-------	-------	-------	-------	-------	-------	-------	-------	-------	-------	-------	-------	-------	-------	-------	-------	-------	-------	-------	-------	-------	-------	-------	-------	-------	-------	-------	-------	-------	-------	-------	-------	-------	-------	-------	-------	-------	-------	-------	-------	-------	-------	-------	-------	-------	-------	-------	-------	-------	-------	-------	-------	-------	-------	-------	-------	-------	-------	-------	-------	-------	-------	-------	-------	-------	-------	-------	-------	-------	-------	-------	-------	-------	-------	-------	-------	-------	-------	-------	-------	-------	-------	-------	-------	-------	-------	-------	-------	-------	-------	-------	-------	-------	-------	-------	-------	-------	-------	-------	-------	-------	-------	-------	-------	-------	-------	-------	-------	-------	-------	-------	-------	-------	-------	-------	-------	-------	-------	-------	-------	-------	-------	-------	-------	-------	-------	-------	-------	-------	-------	-------	-------	-------	-------	-------	-------	-------	-------	-------	-------	-------	-------	-------	-------	-------	-------	-------	-------	-------	-------	-------	-------	-------	-------	-------	-------	-------	-------	-------	-------	-------	-------	-------	-------	-------	-------	-------	-------	-------	-------	-------	-------	-------	-------	-------	-------	-------	-------	-------	-------	-------	-------	-------	-------	-------	-------	-------	-------	-------	-------	-------	-------	-------	-------	-------	-------	-------	-------	-------	-------	-------	-------	-------	-------	-------	-------	-------	-------	-------	-------	-------	-------	-------	-------	-------	-------	-------	-------	-------	-------	-------	-------	-------	-------	-------	-------	-------	-------	-------	-------	-------	-------	-------	-------	-------	-------	-------	-------	-------	-------	-------	-------	-------	-------	-------	-------	-------	-------	-------	-------	-------	-------	-------	-------	-------	-------	-------	-------	-------	-------	-------	-------	-------	-------	-------	-------	-------	-------	-------	-------	-------	-------	-------	-------	-------	-------	-------	-------	-------	-------	-------	-------	-------	-------	-------	-------	-------	-------	-------	-------	-------	-------	-------	-------	-------	-------	-------	-------	-------	-------	-------	-------	-------	-------	-------	-------	-------	-------	-------	-------	-------	-------	-------	-------	-------	-------	-------	-------	-------	-------	-------	-------	-------	-------	-------	-------	-------	-------	-------	-------	-------	-------	-------	-------	-------	-------	-------	-------	-------	-------	-------	-------	-------	-------	-------	-------	-------	-------	-------	-------	-------	-------	-------	-------	-------	-------	-------	-------	-------	-------	-------	-------	-------	-------	-------	-------	-------	-------	-------	-------	-------	-------	-------	-------	-------	-------	-------	-------	-------	-------	-------	-------	-------	-------	-------	-------	-------	-------	-------	-------	-------	-------	-------	-------	-------	-------	-------	-------	-------	-------	-------	-------	-------	-------	-------	-------	-------	-------	-------	-------	-------	-------	-------	-------	-------	-------	-------	-------	-------	-------	-------	-------	-------	-------	-------	-------	-------	-------	-------	-------	-------	-------	-------	-------	-------	-------	-------	-------	-------	-------	-------	-------	-------	-------	-------	-------	-------	-------	-------	-------	-------	-------	-------	-------	-------	-------	-------	-------	-------	-------	-------	-------	-------	-------	-------	-------	-------	-------	-------	-------	-------	-------	-------	-------	-------	-------	-------	-------	-------	-------	-------	-------	-------	-------	-------	-------	-------	-------	-------	-------	-------	-------	-------	-------	-------	-------	-------	-------	-------	-------	-------	-------	-------	-------	-------	-------	-------	-------	-------	-------	-------	-------	-------	-------	-------	-------	-------	-------	-------	-------	-------	-------	-------	-------	-------	-------	-------	-------	-------	-------	-------	-------	-------	-------	-------	-------	-------	-------	-------	-------	-------	-------	-------	-------	-------	-------	-------	-------	-------	-------	-------	-------	-------	-------	-------	-------	-------	-------	-------	-------	-------	-------	-------	-------	-------	-------	-------	-------	-------	-------	-------	-------	-------	-------	-------	-------	-------	-------	-------	-------	-------	-------	-------	-------	-------	-------	-------	-------	-------	-------	-------	-------	--------	--------	--------	--------	--------	--------	--------	--------	--------	--------	--------	--------	--------	--------	--------	--------	--------	--------	--------	--------	--------	--------	--------	--------	--------	--------	--------	--------	--------	--------	--------	--------	--------	--------	--------	--------	--------	--------	--------	--------	--------	--------	--------	--------	--------	--------	--------	--------	--------	--------	--------	--------	--------	--------	--------	--------	--------	--------	--------	--------	--------	--------	--------	--------	--------	--------	--------	--------	--------	--------	--------	--------	--------	--------	--------	--------	--------	--------	--------	--------	--------	--------	--------	--------	--------	--------	--------	--------	--------	--------	--------	--------	--------	--------	--------	--------	--------	--------	--------	--------	--------	--------	--------	--------	--------	--------	--------	--------	--------	--------	--------	--------	--------	--------	--------	--------	--------	--------	--------	--------	--------	--------	--------	--------	--------	--------	--------	--------	--------	--------	--------	--------	--------	--------	--------	--------	--------	--------	--------	--------	--------	--------	--------	--------	--------	--------	--------	--------	--------	--------	--------	--------	--------	--------	--------	--------	--------	--------	--------	--------	--------	--------	--------	--------	--------	--------	--------	--------	--------	--------	--------	--------	--------	--------	--------	--------	--------	--------	--------	--------	--------	--------	--------	--------	--------	--------	--------	--------	--------	--------	--------	--------	--------	--------	--------	--------	--------	--------	--------	--------	--------	--------	--------	--------	--------	--------	--------	--------	--------	--------	--------	--------	--------	--------	--------	--------	--------	--------	--------	--------	--------	--------	--------	--------	--------	--------	--------	--------	--------	--------	--------	--------	--------	--------	--------	--------	--------	--------	--------	--------	--------	--------	--------	--------	--------	--------	--------	--------	--------	--------	--------	--------	--------	--------	--------	--------	--------	--------	--------	--------	--------	--------	--------	--------	--------	--------	--------	--------	--------	--------	--------	--------	--------	--------	--------	--------	--------	--------	--------	--------	--------	--------	--------	--------	--------	--------	--------	--------	--------	--------	--------	--------	--------	--------	--------	--------	--------	--------	--------	--------	--------	--------	--------	--------	--------	--------	--------	--------	--------	--------	--------	--------	--------	--------	--------	--------	--------	--------	--------	--------	--------	--------	--------	--------	--------	--------

### **Lens Function Buttons**

The roles played by the **L-Fn** and **L-Fn2** buttons can be chosen using [ **Lens Fn button**] and [ **Lens Fn2 button**], respectively. As of April, 2022, the following Z mount lenses are equipped with function buttons:

#### • ***L-Fn Only***

- NIKKOR Z 14–24mm f/2.8 S
- NIKKOR Z 24–70mm f/2.8 S
- NIKKOR Z 50mm f/1.2 S
- NIKKOR Z 58mm f/0.95 S Noct
- NIKKOR Z MC 105mm f/2.8 VR S

#### • ***L-Fn and L-Fn2***

- NIKKOR Z 70–200mm f/2.8 VR S
- NIKKOR Z 100–400mm f/4.5–5.6 VR S
- NIKKOR Z 400mm f/2.8 TC VR S
- NIKKOR Z 800mm f/6.3 VR S



## Recommended AF Settings by Event

This section offers some advice on adjusting autofocus-related settings for different sporting events.

### Overview: Settings by Event

The settings for different events are summarized in the table below. For all events listed, we recommend that you select a focus mode of **AF-C**, choose **[Release]** for Custom Setting a1 **[AF-C priority selection]**, and select **[Auto]** for **[AF subject detection options]** in the photo shooting menu.

Event		AF-area mode	Custom settings		
			a3		a5
			Blocked shot AF response	Subject motion	
<a href="#">Soccer (page 18)</a>		Dynamic-area AF (S) or wide-area AF (C1)	2	Steady	Focus point
Gymnastics	<a href="#">Floor exercises, rhythmic gymnastics (page 18)</a>	Auto-area AF	—	—	—
	<a href="#">Balance beam (page 19)</a>	3D-tracking			Focus point and AF-area mode
	<a href="#">Vault (page 19)</a>	Auto-area AF			—
	<a href="#">Rings and horizontal and uneven bars (page 19)</a>	3D-tracking			—
Athletics	<a href="#">Sprints (hand-held shots focusing on a single runner approaching the camera, page 20)</a>	3D-tracking or wide-area AF (C1)	—	—	Focus point
	<a href="#">Hurdles (page 21)</a>				
	<a href="#">Marathons (from a vehicle, page 21)</a>	Dynamic-area AF (S)	3	Steady	—
	<a href="#">Shot put, discus, hammer throw, and javelin (from the front, at a distance, page 21)</a>	Auto-area AF	—	—	
	<a href="#">Long jump, triple jump, and pole vault (facing oncoming jumpers, page 22)</a>	Auto-area AF or wide-area AF (C1)			
	<a href="#">High jump (page 22)</a>	Wide-area AF (L)			
Aquatics	<a href="#">Swimming (page 23)</a>	Wide-area AF (C1) or dynamic-area AF (S)	2	Steady	—
	<a href="#">Diving (page 24)</a>	Auto-area AF or wide-area AF (C1)	—	—	
	<a href="#">Artistic swimming (page 24)</a>	Wide-area AF (S or L)	—	—	
<a href="#">Table tennis (page 25)</a>		3D-tracking or wide-area AF (C1)	—	—	—
<a href="#">BMX and skateboarding (page 25)</a>		Auto-area AF or wide-area AF (C1)	—	—	Focus point
<a href="#">Motor sports (page 25)</a>		3D-tracking or wide-area AF (C1)	—	—	Focus point

Custom Settings: a3 **[Focus tracking with lock-on]** ([page 9](#)); a5 **[Store points by orientation]** ([page 10](#))

#### 🔧 Custom Focus Areas

If you find that the camera tends to focus on objects in the foreground or background above, below, or to either side of your intended target, you can tailor the focus area to better fit your subject using wide-area AF (C1) or wide-area AF (C2).

#### 🔧 Vibration Reduction

Selecting **[Sport]** for **[Vibration reduction]** in the photo shooting menu stabilizes the image in the display and makes it easier to track your subject.

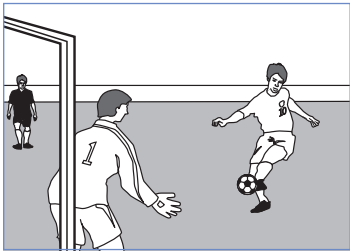
#### 🔧 F Mount Lenses with Vibration Reduction Switches

If an F mount lens with a vibration reduction switch is mounted on the camera using a mount adapter, the **[Vibration reduction]** item in the photo shooting menu will be grayed out and unavailable. Use the controls on the lens for vibration reduction.

Soccer

Photographing soccer matches involves quick changes of focus and subjects that may be briefly obscured by foreground objects. The following autofocus settings are recommended:

Focus mode		AF-C
AF-area mode		Dynamic-area AF (S) or wide-area AF (C1)
Custom Settings		
a1 AF-C priority selection		[Release]
a3 Focus tracking with lock-on	Blocked shot AF response	[2]
	Subject motion	[Steady]
a5 Store points by orientation		[Focus point]



For photographs of a single athlete in a distant group of players, we recommend that you restrict focus to a smaller area by choosing wide-area AF (C1) and selecting a small custom focus area such as 1 × 1 or 1 × 3.

Gymnastics

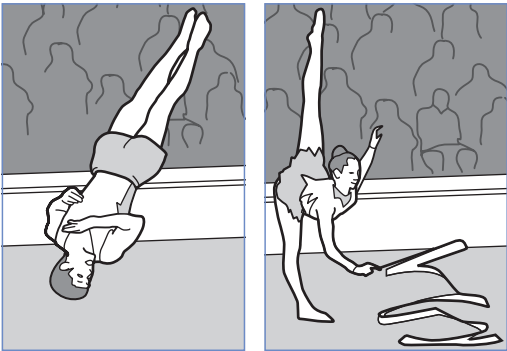
This section lists some suggested settings for gymnastics events.

■ Floor Exercises and Rhythmic Gymnastics

Auto-area AF is recommended if composition is a priority.

Focus mode	AF-C
AF-area mode	Auto-area AF
Custom Settings	
a1 AF-C priority selection	[Release]

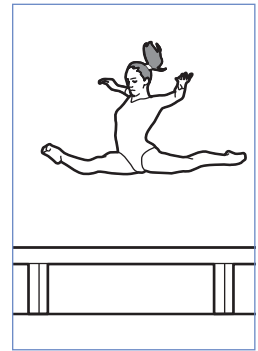
Select [Focus point and AF-area mode] for Custom Setting a5 [Store points by orientation] to automatically switch focus points and AF-area modes as you rotate the camera ([page 10](#)). Choose [Alternating points] for Custom Setting a4 [Focus points used] to reduce the number of focus points for quicker selection ([page 9](#)).



### ■ Balance Beam

To automatically switch focus points and AF-area modes as you rotate the camera from “wide” to “tall” orientation, select **[Focus point and AF-area mode]** for Custom Setting a5 **[Store points by orientation]** ([page 10](#)).

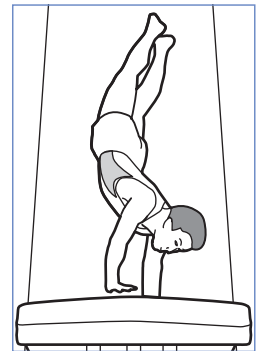
<b>Focus mode</b>	AF-C
<b>AF-area mode</b>	3D-tracking
<b>Custom Settings</b>	
a1 AF-C priority selection	<b>[Release]</b>
a5 Store points by orientation	<b>[Focus point and AF-area mode]</b>



### ■ Vault

If you find the subject hard to frame, selecting auto-area AF will allow you concentrate on composition while leaving the camera in charge of choosing the focus point.

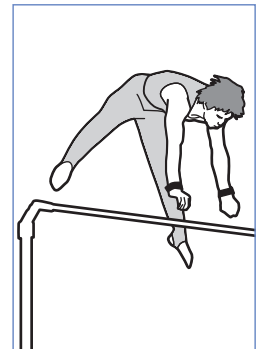
<b>Focus mode</b>	AF-C
<b>AF-area mode</b>	Auto-area AF
<b>Custom Settings</b>	
a1 AF-C priority selection	<b>[Release]</b>



### ■ Rings and Horizontal and Uneven Bars

3D-tracking is recommended for subjects that change posture and position frequently and often are near apparatus such as bars or rings.

<b>Focus mode</b>	AF-C
<b>AF-area mode</b>	3D-tracking
<b>Custom Settings</b>	
a1 AF-C priority selection	<b>[Release]</b>



Athletics

You may find these settings useful when photographing road-running or track-and-field events.

■ Sprints (Hand-Held, Single Runner, from the Front)

Choose wide-area AF (C1) with a wide custom focus area (for example, 19 × 3 or 13 × 3) to focus on the closest subject when shooting with the camera in “wide” (landscape) orientation and runners lined up across the frame. We also recommend choosing [Auto] or [People] for [AF subject detection options] in the photo shooting menu. Dynamic-area AF (S) is recommended for photos of runners on a distant starting line.

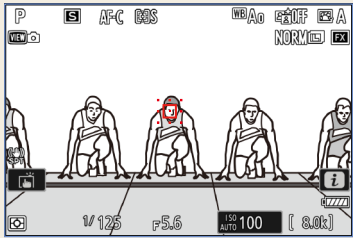
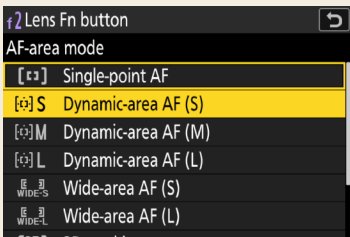


Focus mode	AF-C
AF-area mode	3D-tracking or wide-area AF (C1)
Custom Settings	
a1 AF-C priority selection	[Release]
a5 Store points by orientation	[Focus point]

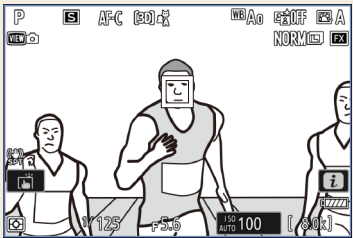
When photographing runners after they have crossed the finish line, select [Focus point and AF-area mode] for Custom Setting a5 [Store points by orientation] to automatically switch focus points and AF-area modes as you rotate the camera between “tall” (portrait) orientations and “wide” (landscape) orientation ([page 10](#)).

⚡ Instant AF-Area Mode Selection

For flexible AF-area mode selection when photographing approaching runners, select 3D-tracking with the camera and assign [Dynamic-area AF (S)] or [Wide-area AF (C1)] to the lens L-Fn or L-Fn2 buttons using Custom Setting f2 [Custom controls (shooting)] > [L-Fn Lens Fn button]/[L-Fn2 Lens Fn2 button] > [AF-area mode] ([page 15](#)). You can then press a lens function button to select dynamic-area AF (S) or wide-area AF (C1) when your subject is far away and release the button to instantly switch to 3D-tracking as the runners approach.



Dynamic-area AF (S) or wide-area AF (C1)  
(distant subject)

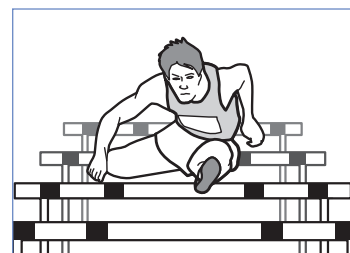


3D-tracking  
(runner approaching)

AF-area mode can also be assigned to the Fn1, Fn2, Fn3, or AF-ON button, to the center of the sub-selector or vertical multi selector, or to the AF-ON button for vertical shooting ([page 15](#)).

### ■ Hurdles

The settings below let you refocus as needed if the camera focuses on the hurdles in the foreground while the race is being run. If desired, you can select wide-area AF (C1) and choose a focus area with proportions and dimensions tailored to avoid focusing on the hurdles altogether. When photographing hurdlers who have crossed the finish line, select **[Focus point and AF-area mode]** for Custom Setting a5 **[Store points by orientation]** to automatically switch focus points and AF-area modes as you rotate the camera between “tall” (portrait) orientations and “wide” (landscape) orientation ([page 10](#)).

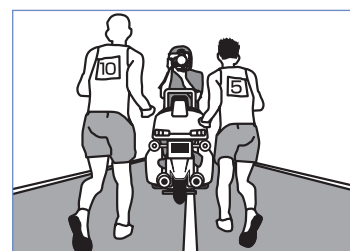


<b>Focus mode</b>	AF-C
<b>AF-area mode</b>	3D-tracking or wide-area AF (C1)
<b>Custom Settings</b>	
a1 AF-C priority selection	<b>[Release]</b>
a5 Store points by orientation	<b>[Focus point]</b>

### ■ Marathons (from a Vehicle)

When shooting from a moving vehicle, choose dynamic-area AF (S) to keep specific runners in focus as they change position in the pack.

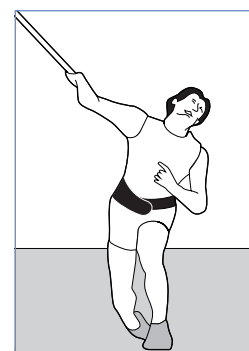
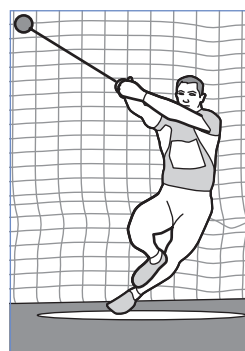
<b>Focus mode</b>	AF-C
<b>AF-area mode</b>	Dynamic-area AF (S)
<b>Custom Settings</b>	
a1 AF-C priority selection	<b>[Release]</b>
a3 Focus tracking with lock-on	Blocked shot AF response <b>[3]</b>
	Subject motion <b>[Steady]</b>
a5 Store points by orientation	<b>[Focus point]</b>



### ■ Shot Put, Discus, Hammer Throw, and Javelin (from the Front, at a Distance)

If you find the subject hard to frame, selecting auto-area AF will allow you concentrate on composition while leaving the camera in charge of choosing the focus point.

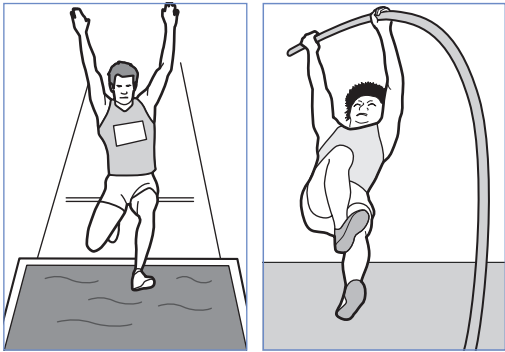
<b>Focus mode</b>	AF-C
<b>AF-area mode</b>	Auto-area AF
<b>Custom Settings</b>	
a1 AF-C priority selection	<b>[Release]</b>



■ Long Jump, Triple Jump, and Pole Vault (Facing Oncoming Jumpers)

Auto-area AF is recommended for subjects that rapidly change posture and position. For moments when the jumper will occupy an area of the frame with known proportions and dimensions, choose wide-area AF (C1) and tailor the focus area to fit.

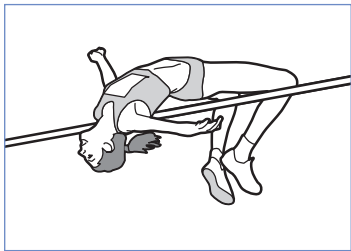
Focus mode	AF-C
AF-area mode	Auto-area AF or wide-area AF (C1)
Custom Settings	
a1 AF-C priority selection	[Release]



■ High Jump

Wide-area AF (L) is recommended for events in which the subject's face may be momentarily hidden from view. In the case of the high jump, focus will continue to track subjects without being affected by bars or poles in the foreground, even if the jumpers briefly turn away from the camera.

Focus mode	AF-C
AF-area mode	Wide-area AF (L)
Custom Settings	
a1 AF-C priority selection	[Release]

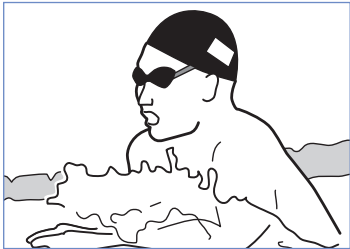


## Aquatics

Here are some settings you may find helpful when photographing aquatic events.

### ■ Swimming

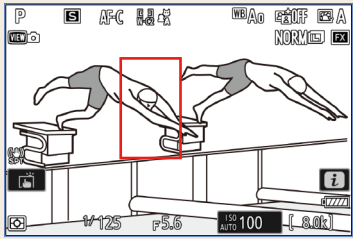
To ensure that the camera focuses on the swimmer's face rather than on splashes, either (a) restrict focus to a smaller area by choosing wide-area AF (C1) and selecting a small custom area such as  $1 \times 1$ , or (b) select dynamic-area AF (S). You may also find it helpful to choose **[Auto]** or **[People]** for **[AF subject detection options]** in the photo shooting menu. To quickly switch focus from one swimmer to another, choose lower values for Custom Setting a3 **[Focus tracking with lock-on]** > **[Blocked shot AF response]**.



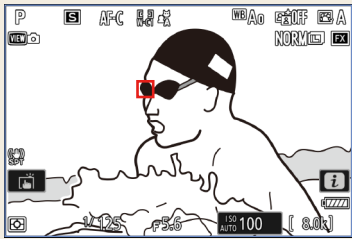
Focus mode		AF-C
AF-area mode		Wide-area AF (C1) or dynamic-area AF (S)
Custom Settings		
a1 AF-C priority selection		<b>[Release]</b>
a3 Focus tracking with lock-on	Blocked shot AF response	<b>[2]</b>
	Subject motion	<b>[Steady]</b>

### 🔗 Instant AF-Area Mode Selection

For flexible AF-area mode selection when photographing the start of a race, select wide-area AF (C1) and choose a small custom focus area as described above, and then assign **[Wide-area AF (C2)]** with a tall custom focus area such as  $5 \times 7$  or  $5 \times 11$  to the lens **L-Fn** or **L-Fn2** buttons using Custom Setting f2 **[Custom controls (shooting)]** > **[Lfn Lens Fn button]/[Lfn2 Lens Fn2 button]** > **[AF-area mode]** ([page 15](#)). You can then press a lens function button to select the tall focus area to capture the large motions of the swimmers diving from the starting blocks and release the button to instantly switch to a smaller focus area when focusing on specific subjects in the water.



Wide-area AF (C2):  $5 \times 7$   
(subjects diving)

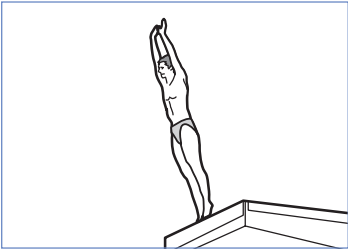


Wide-area AF (C1):  $1 \times 1$   
(subject swimming)

AF-area mode can also be assigned to the **Fn1**, **Fn2**, **Fn3**, or **AF-ON** button, to the center of the sub-selector or vertical multi selector, or to the **AF-ON** button for vertical shooting ([page 15](#)).

■ **Diving**

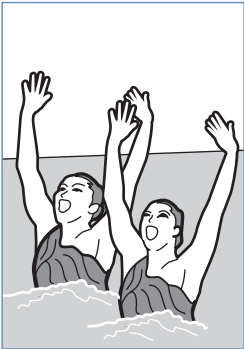
Choosing auto-area AF lets you concentrate on composition when photographing divers and other hard-to-frame subjects. Focus will automatically track the subject while the **AF-ON** button is pressed or the shutter-release button is pressed halfway. For moments when the diver will occupy an area of the frame with known proportions and dimensions, choose wide-area AF (C1) and tailor the focus area to fit.



Focus mode	AF-C
AF-area mode	Auto-area AF or wide-area AF (C1)
Custom Settings	
a1 AF-C priority selection	[Release]

■ **Artistic Swimming**

For events such as artistic swimming (also known as synchronized swimming), where your subjects change pose with dizzying speed and focus constantly switches from one subject to another, we recommend the ever-adaptable wide-area AF (S).



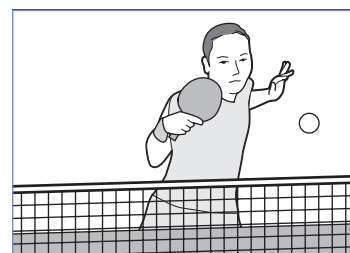
Focus mode	AF-C
AF-area mode	Wide-area AF (S or L)
Custom Settings	
a1 AF-C priority selection	[Release]



## Table Tennis

Using 3D-tracking helps you frame shots with the net in the foreground. If desired, you can select wide-area AF (C1) and choose a focus area with proportions and dimensions tailored to avoid focusing on the net altogether. You may also find it helpful to choose **[Auto]** or **[People]** for **[AF subject detection options]** in the photo shooting menu.

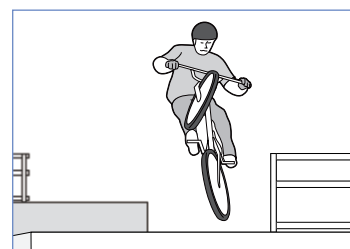
<b>Focus mode</b>	AF-C
<b>AF-area mode</b>	3D-tracking or wide-area AF (C1)
<b>Custom Settings</b>	
a1 AF-C priority selection	<b>[Release]</b>



## BMX and Skateboarding

If you find the subject hard to frame, selecting auto-area AF will allow you concentrate on composition while leaving the camera in charge of choosing the focus point. For moments when the subject will occupy an area of the frame with known proportions and dimensions, choose wide-area AF (C1) and tailor the focus area to fit. To focus on the rider when photographing BMX events, select **[People]** for **[AF subject detection options]** in the photo shooting menu.

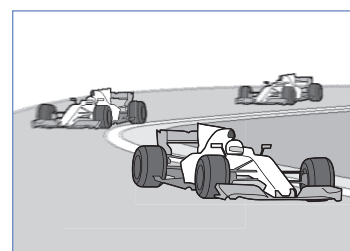
<b>Focus mode</b>	AF-C
<b>AF-area mode</b>	Auto-area AF or wide-area AF (C1)
<b>Custom Settings</b>	
a1 AF-C priority selection	<b>[Release]</b>
a5 Store points by orientation	<b>[Focus point]</b>



## Motor Sports

For moments when a vehicle will occupy an area of the frame with known proportions and dimensions, choose wide-area AF (C1) with a wide custom focus area (for example,  $19 \times 3$  or  $13 \times 3$ ). You may also find it helpful to choose **[Auto]** or **[Vehicle]** for **[AF subject detection options]** in the photo shooting menu when photographing the cars or motorcycles and **[People]** to focus on the racers after they leave their vehicles.

<b>Focus mode</b>	AF-C
<b>AF-area mode</b>	3D-tracking or wide-area AF (C1)
<b>Custom Settings</b>	
a1 AF-C priority selection	<b>[Release]</b>
a5 Store points by orientation	<b>[Focus point]</b>



***Nikon***